

ROSA®



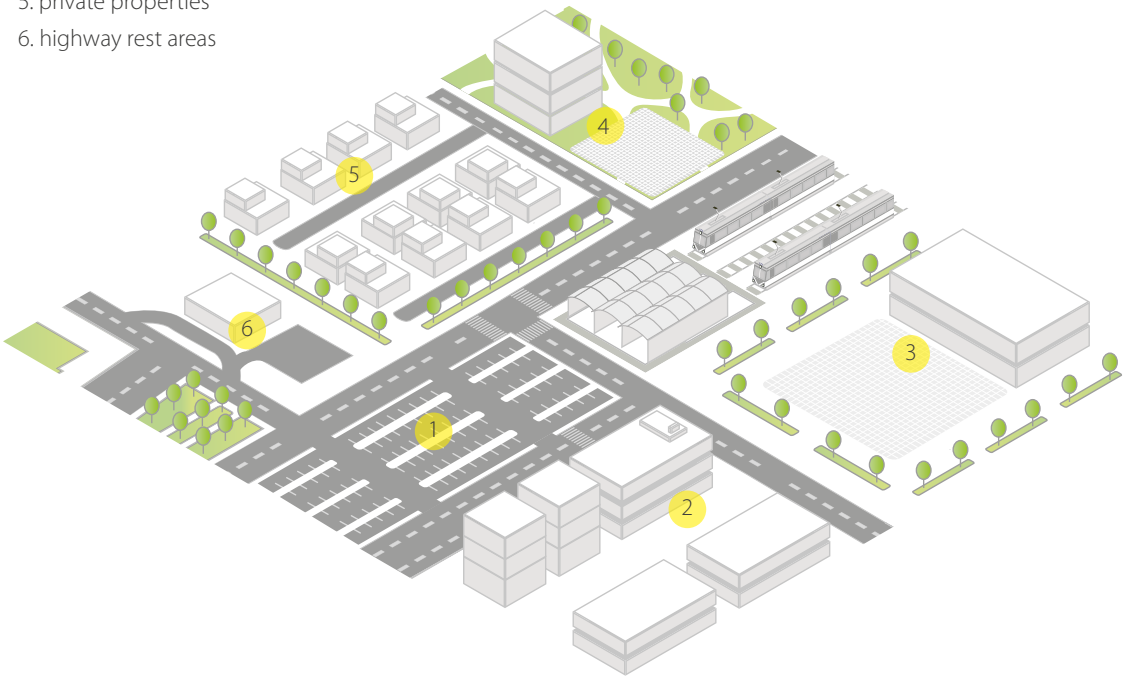
KARIN LED EV

KARIN EV LED

- charging station integrated into a lighting column
- charging electric vehicles in Mode 3 with power up to 22kW
- charging socket in accordance with IEC62196 Type-2
- compliance with the OCPP protocol ensuring the effectiveness of authorization and billing
- simple and intuitive operation
- charger status indication
- energy-saving and ecological light sources
- light source life-time of L90F10 - 50 000h, L80F20 - 100 000h
- modern and decorative design
- resistance to corrosion and harmful external factors
- wide luminaire operating temperature range from -40°C to + 40°C

Application

1. parking lots in public spaces
2. office buildings surrounding
3. shopping centers
4. hotels and restaurants
5. private properties
6. highway rest areas



Features



Possibility of integration with a billing system

Open OCPP v.1.6 protocol

Communication

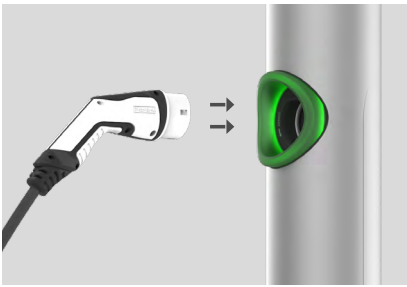
4G or Ethernet

LED module

light temperature 5000K, 4000K, 3500K or 2700K

Frosted diffuser made of PMMA

Safe and intuitive charging process



Charger status indication - RGB module

green colour - charging point is available
blue colour - charging point is occupied
red colour - charging point is inactive



Electricity meter in accordance with MID directive

The wiring chamber is locked with a key



Anodised aluminum body

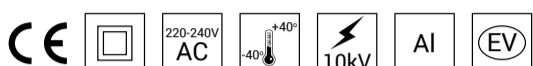
available in 10 colours, each with possibility of chemical brightening with anti-corrosive and decorative properties



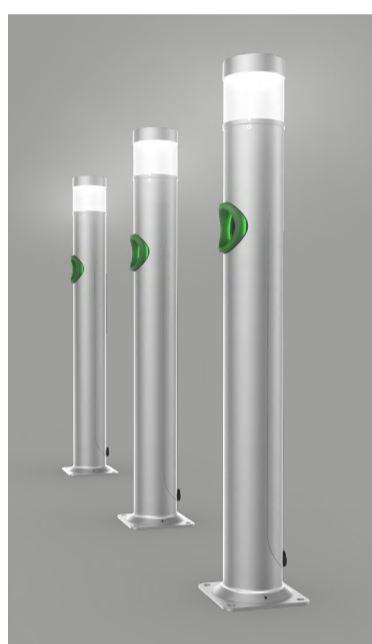


KARIN EV LED

KARIN EV LED is an esthetic combination of a KARIN LED compact lighting bollard with the functionality of an intelligent charging system for electric vehicles. Column is made of aluminum protected with anodic coating. The use of high-quality LEDs ensures even and efficient lighting. The charging system is supported by Open Charge Point Protocol (OCPP) ensuring the effectiveness of authorization and billing.¹



2in1 LED lighting Vehicle charging



LED lighting columns



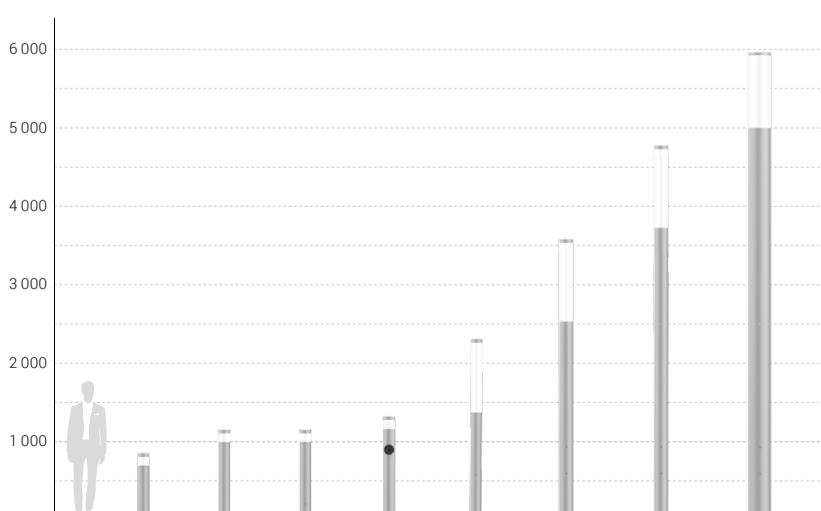
Electric vehicle charging point

Safe and intuitive charging process

The system provides easy and safe charging process. The socket is equipped with a shutter that closes and protects the electrical contents when the cable is not connected. The voltage at the socket is only applied after the charging process has been initiated.



The KARIN LED column family



1 Strefowa Street, PL43109 Tychy, Poland

Sales Department

tel. +48 32 738 89 10 - 17

fax +48 32 738 89 09

e-mail: dyrekcja@rosa.pl

www.rosa.pl

